

# Catholic Community of St. Anne & St. Elizabeth of Hungary

**St. Anne Catholic Church**  
“A Beacon of Hope and Inspiration”  
New Castle | Henry County | Founded 1873

**St. Elizabeth Of Hungary Catholic Church**  
“A Pioneer Parish of Eastern Indiana”  
Cambridge City | Wayne County | Founded 1852

Mailing Address: 102 N. 19th Street, New Castle, IN 47362 ~ Website: [www.stannenc.com](http://www.stannenc.com)

## Worship Schedule

### Weekday Holy Mass

Tuesday: 5:30 p.m. - St. Elizabeth  
Wednesday: 5:30 p.m. - St. Anne  
Thursday: 8:00 a.m. - St. Anne  
Friday: 8:00 a.m. - St. Anne

### Devotion to the Sacred Heart of Jesus First Fridays at St. Anne

Confession and Holy Hour: 11:00 a.m.  
Holy Mass and Devotion: 12:00 p.m.

### Lord's Day Holy Mass

Saturday: 5:00 p.m. - St. Elizabeth  
Sunday: 8:00 a.m. - St. Elizabeth  
10:00 a.m. - St. Anne

### Confessions and Holy Hour

Tuesday - 4:30-5:15 p.m. at St. Elizabeth  
Wednesday - 4:30-5:15 at St. Anne

Also available by appointment

### Sacraments

*Marriage* - Call the Parish Office to make an appointment at least 9 months in advance.

*Baptism* - Call 1 month in advance.

*Vocations to the Priesthood and Religious Life, contact: Fr. Michael, 765-529-0933*

### Pastor

Rev. Michaelprakasam Puthumaisavari  
[pastor@sa-se.org](mailto:pastor@sa-se.org)

### Staff

#### **Business Manager:**

Patty Hughes, [businessmanager@sa-se.org](mailto:businessmanager@sa-se.org)

#### **Secretary:**

Mallory Houser, [secretary@sa-se.org](mailto:secretary@sa-se.org)

#### **Finance Chair for St. Anne:**

Bill Hubbard, [jbbhubbard68@hotmail.com](mailto:jbbhubbard68@hotmail.com)

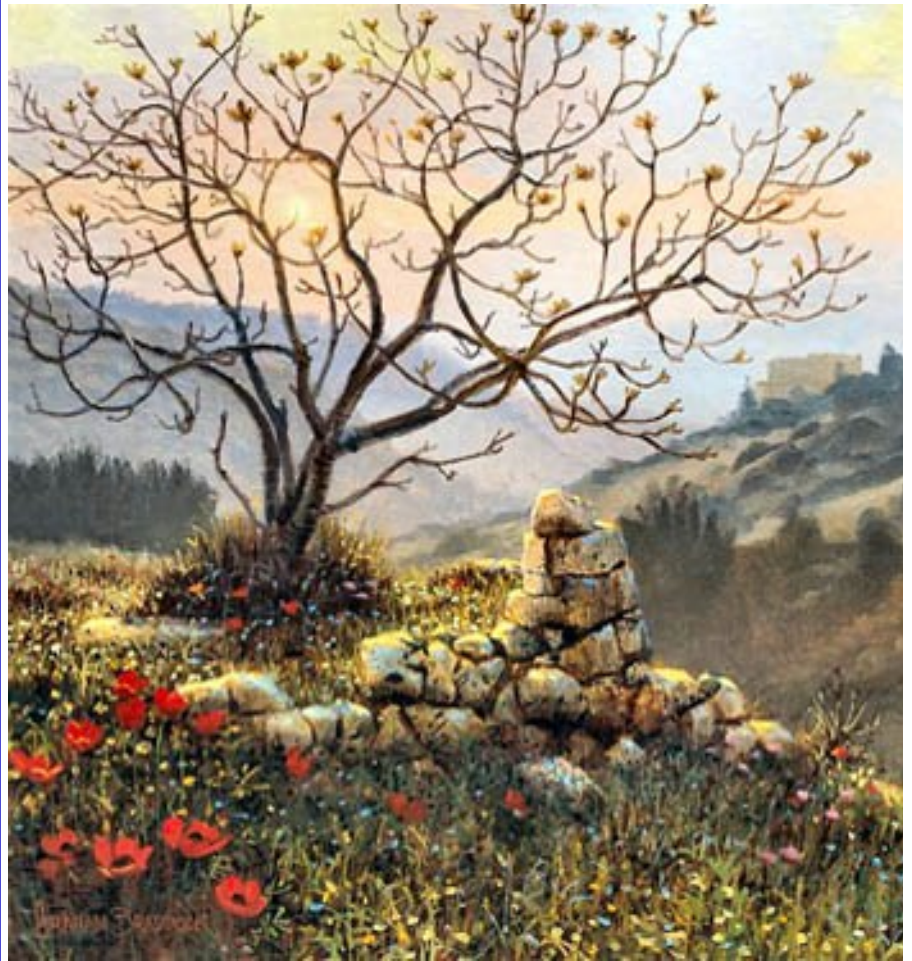
#### **Finance Chair for St. Elizabeth:**

Sherry Rankin, [srankin@iu.edu](mailto:srankin@iu.edu)

### Office Hours

**St. Anne:** Mon. - Thurs., 8:30 - Noon, 1:00 - 4:30  
Phone: 765-529-0933

**St. Elizabeth:** Mon., 8:30 - 11:00  
Phone: 765-478-3242



“I have witnessed the affliction of  
my people ..., and have heard  
their cry of complaint...”

Exodus 3:7

March 23, 2025

3rd Sunday of Lent (Year C)

Have a blessed week!

## Announcements

- ◆ **The Daughters of Isabella** will meet on Monday, March 24th at 6:30 pm in the Center at St. Elizabeth's in Cambridge City. The Spiritual Committee will have a Lenten Program for us.

### Thank You

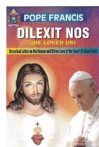
St. Anne and St. Elizabeth Parishioners,

We would like to extend our heartfelt gratitude to all who attended our Lenten Day of Prayer with Fr. Vinny. Your presence made the evening truly special, and we hope you found it as enriching and inspiring as we did.

We also want to express our sincere appreciation to everyone who contributed to the meal and provided delicious desserts. Your generosity and efforts played a vital role in creating a warm and welcoming atmosphere for all attendees.

Thank you for your continued support and participation in our church community.

### Lenten Reflection Session: He Loved Us



**Dates: Monday's March 17 - April 7**

**Time: 6:00 p.m.**

**Place: St. Rose Hall, St. Anne Church, New Castle**

### Stations of the Cross

Each Friday of Lent, at 5:30 p.m.  
alternating at each church location;

**St. Elizabeth - March 28, April 11**  
**St. Anne - April 4**



### FISH FRY

**St. Elizabeth - March 28**

**Time: 4:00 p.m. - 7:00 p.m.**

**Cash or Card Excepted**

**\$12 - Adult**

**\$20 - Couple**

**\$25 - Family (Couple + 1 or more children)**

**\*All are welcome!\***

### Daily Readings, Saint of Day

**Sunday, 3/23** - Exodus 3:1-8a, 13-15, 1 Corinthians 10:1-6, 10-12, Luke 13:1-9

**Monday, 3/24** - 2 Kings 5:1-15ab, Luke 4:24-30

**Tuesday, 3/25** - (**The Annunciation of the Lord**) Isaiah 7:10-14; 8:10, Hebrews 10:4-10, Luke 1:26-38

**Wednesday, 3/26** - Deuteronomy 4:1, 5-9, Matthew 5:17-19

**Thursday, 3/27** - Jeremiah 7:23-28, Luke 11:14-23

**Friday, 3/28** - Hosea 14:2-10, Mark 12:28-34

**Saturday, 3/29** - Hosea 6:1-6, Luke 18:9-14



### Lenten Parish Penance Service

**St. Elizabeth's: March 29, 9:00 a.m. – 12:00 p.m.**

Take advantage of this opportunity to receive the Sacrament of Reconciliation, reflect on your relationship with God and others and deepen your spiritual journey during Lent.



### Easter Choir Practice

Mark your calendar if you want to be part of the St. Anne choir for Holy Week and/or Easter. Rehearsals will be on Tuesdays, March 25, April 1, 8, and 15, from 6:00 to 7:00 p.m. at St. Anne church. Please contact Patti Keesling (765-729-3741) if you have any questions.



### 2025 Community Lenten Service Invite

St. Elizabeth Parishioners are hosting an ecumenical Lenten service **March 30 at 6:00 p.m.** at St. Elizabeth's Church, Cambridge City.

This ecumenical gathering will bring together friends from various Christian denominations across Cambridge City, fostering a spirit of unity and shared faith.

You are most welcome to join us on this day.

Looking forward to seeing you all!

**St. Elizabeth's Parish Council**



### St. Anne Cemetery Clean - up April 1 - 6

If you have a little spare time to help by going out and picking up any trash, debris or decorations that need removed or have blown against the fence, it would be greatly appreciated. If you would also take a trash bag with you and dispose of it at home, that would help out tremendously!

After April 6, any unsightly or damaged decorations will be removed for the mowing season. Remember, when putting decorations on a gravesite, please place them on the side of the monument. No decorations should be placed in the mowing path. If so, your decorations could be damaged or removed.

### Easter Memorials

St. Anne and St. Elizabeth's are collecting for Easter Memorials. Funds will go toward Easter flowers and occasions throughout the year at each parish. Memorials will be in the bulletin on Easter, April 20.



If you would like to remember someone, (living or deceased) this Christmas in our Memorials, please place your donation in an envelope, mark who the memorial(s) is for and who it is from. Place your envelope in the collection or mail it to the parish office. Suggested offering is \$10/per each memorial. Memorials must be received by **Sunday, April 13.**

## Welcome Visitors and New Parishioners!

We are glad that you took the time to join us for Mass. If you are new to the parish, we extend a special welcome to you and hope that you will find your spiritual home here. Please introduce yourself to Father Michael after Mass or call the office to register as parishioners.

### Grotto Bricks



Memorial bricks at the St. Anne Cemetery grotto are still available for purchase. Cost is \$150.00. Forms can be found at the entrances of church or on our website under the 'Cemetery' tab.

This will be our last call before spring. If you wish to purchase a brick, please fill out a form and return it to the office by April 15. Thank you!



### Fr. Luerman Scholarship

We are accepting applications for the Fr. John Luerman Scholarship, awarded to one boy and one girl from St. Elizabeth Parish. You must be an active member of St. Elizabeth parish and be Confirmed. Applications are available at the church entrances and in the parish center. Applications are due [April 13](#).

### Solidarity Fund for Church in Africa & 2025 Catholic Relief Services Collection



This weekend, we will be taking up a collection for Solidarity Fund for Church in Africa. Next week, March 29 and 30, we will be taking up a collection for Catholic Relief Services. You will find these collection envelopes in the pews at each parish. Please place your envelope in the second collection basket with the red trim. Thank you.

### ST. ANNE

#### MASS INTENTIONS

Wed, 3/26	† Janette Hauser
Thurs., 3/27	for the homebound
Friday, 3/28	for Vocations
Sunday, 3/30	† Ed Leyes

#### LITURGICAL MINISTERS

<b>SUNDAY</b>	<b>March 30</b>	<b>10:00 a.m.</b>
CANTOR	Pat Cronk	
SERVER	Kenlee B., Myriah H.	
LECTOR	John Hawrot, Phyllis Slavens	
EXTRAORDINARY MINISTERS OF HOLY COMMUNION	Volunteer, Luke Mohr	
HOSPITALITY MINISTERS	Bob & Jaci Hadsell	
GIFTS	volunteers	

#### Sunday Offerings

<b>3/16</b>	Collection.....	\$2,744.00
	Loose.....	\$150.00
	Direct Deposit.....	\$1,342.00
	Total.....	\$4,236.00

Capital Improv.....\$40.00  
 Criterion.....\$40.00  
 Blk/Indian.....\$50.00

Sunday Attendance: 166

### ST. ELIZABETH

#### MASS INTENTIONS

Tues., 3/25	† Helen & Robert Longnecker
Saturday, 3/29	† Carl Allen
Sunday, 3/30	St. Elizabeth & St. Anne Churches

#### LITURGICAL MINISTERS

<b>SATURDAY</b>	<b>March 29</b>	<b>5:00 p.m.</b>
SACRISTAN	Mike & Doris Munchel	
LECTOR	Debbie Weiss	
EMOHC	Mike Munchel	
HOSPITALITY MINISTERS	David & Janet Sweet	
<b>SUNDAY</b>	<b>March 30</b>	<b>8:00 a.m.</b>
SACRISTAN	Mary Ann Avery	
LECTOR	Mary Ann Avery	
EMOHC	Julie Walther	
HOSPITALITY MINISTERS	Carol Rueth, Brian Klein	

#### Sunday Offerings

<b>3/16</b>	Collection.....	\$1,561.00
	Loose.....	\$291.02
	Direct Deposit.....	\$210.00
	Total.....	\$2,062.02

Church in Africa.....\$50.00

Saturday Attendance: 78  
 Sunday Attendance: 70

*Thank you for your offerings, the financial support of our parishioners and visitors is deeply appreciated.*

Locally Owned and Operated

# HINSEY • BROWN

## FUNERAL SERVICE

"The Caring Professionals"

New Castle  
765-529-7100



Knightstown  
765-345-7400



50 N. Perry,  
Hagerstown, IN  
765-489-4463  
www.waldeneyecare.com



## SPROLES FAMILY FUNERAL HOME

2400 S. Memorial Dr.  
New Castle, IN

765-521-2400

www.sprolesfamilycares.com



## Parkview FAMILY DENTISTRY

340 Parkview Dr.  
New Castle

529-7616

Jack Rusch, D.D.S.  
Katie Petry-Rich, D.D.S.

**Matt Huffman**  
Owner/Realtor/Broker

**F.C. TUCKER CROSSROADS  
REAL ESTATE**  
Independently Owned & Operated

1122 Broad Street  
New Castle, IN 47362

765-524-4985

OPEN 7 DAYS  
A WEEK

7 A.M. –  
9 P.M.



AUTO • COMMERCIAL • RESIDENTIAL

765-529-8455

1018 Woodward Av.



## Marshall & ERLEWEIN FUNERAL HOME

Crematory and Monuments

Dublin (toll free) 877-655-5161 Lewisville

DIETZ

ELECTRIC

COMMERCIAL  
INDUSTRIAL

Serving the New Castle Area  
Since 1963

529-2659

Hagerstown  
Family Dentistry  
49 W. Walnut  
765-489-5942



David W. Brown  
Manager

## WEARLY MONUMENTS

2016 S. Memorial Dr.  
New Castle, IN 47362  
(765) 529-0703

david@hinsey-brown.com

Discover the difference a  
local bank can make.



765-529-5450 • mycsbin.com

Member FDIC



## NOTRE DAME BOOK SHELF

CATHOLIC GIFTS & BOOKS

1219 Fletcher St. ~ Anderson, IN

765-642-9774

M-F, 10-5; Sat. 10-2

www.notredamebookshelf.com

*In Loving Memory*

of

*Brenda Munchel*



Knights of  
Columbus



#1755

#258

Join us in  
service



**Doug Meier,**  
CLU, LUTCF, CPCU,  
AGENT

318 Parkview Dr.  
New Castle

529-8755

## WASKOM CAPITOL HILL CHAPEL

765-478-4221

1010 East Main Street,  
Cambridge City, IN 47327

www.waskoms.com

FUNERAL & CREMATION SERVICES



510 S. Memorial Dr., New Castle, IN

765-529-3001



I-70 & Hwy 1

Like a good neighbor,  
State Farm is there.